

mornwell

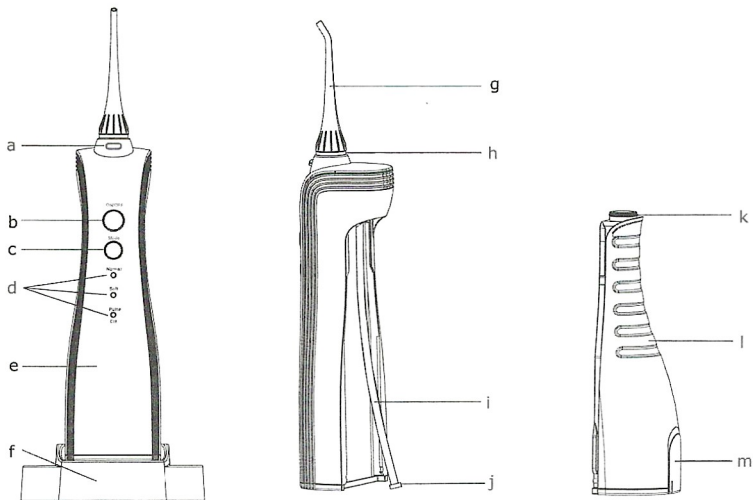


User Guide

Rechargeable Oral Irrigator (D50BS)

For Your Beauty Smile

Package Includes & Introduction



- a. Nozzle release button
- b. On/Off button
- c. Mode button
- d. Mode indicator
- e. Handle
- f. Charging station

- g. Nozzle
- h. Identification Ring
- i. Suction Tube
- j. Filter
- k. Water Tank Ring
- l. Water Tank
- m. Water Tank Cap

- 1x D50 Rechargeable Oral Irrigator
- 2x Nozzle Tips
- 1x Charging Station

- 1x Pocket Tip
- 1x Tongue Scraper
- 1x Orthodontic Tip

Model	D50
Input	AC100~240V 50/60Hz
Battery	Li-ion, 1400mAh
Water tank	150ml
Dimensions	11.1 x 9.1 x 30.1 cm/4.3 x 3.5 x 11.8 in

IMPORTANT SAFEGUARDS

All information in this section is provided to instruct you in the correct and safe operation of this device so that you can avoid injuries to yourself and others as well as damage to property. When using electrical products, especially when children are present, basic safety precautions should always be followed, including the following.

READ ALL INSTRUCTIONS BEFORE USING

DANGERS -To reduce the risk of electrocution

- Toddlers, infants, people who are unable to operate should not allowed use this appliance. Please keep it out of reach of children.
- Never alter the appliance. Also, do not try to disassemble or repair it.
- Do not place or store the product where it can fall or be pulled into tub or sink.
- Do not reach for the product that has fallen into water. Unplug immediately.
- Do not use the product while bathing.
- Do not place in or drop into water or other liquid.
- Always unplug this product immediately after finishing recharging battery.

WARNINGS -Do not place in or drop into water or other liquid

- This appliance can be used by children aged from 8 years and above and persons with reduced physical, sensory or mental capabilities or lack of experience and knowledge if they have been given supervision or instruction concerning use of the appliance in a safe way and understand the hazards involved.
- Children shall not play with the appliance. Cleaning and user maintenance shall not be made by children without supervision.
- The appliance is only to be used with the power supply unit provided with the appliance.
- The battery must be removed from the appliance before it is scrapped.
- The appliance must be disconnected from the supply mains when removing the battery;
- The battery is to be disposed of safely.
- Regarding how to remove the battery, please to see "Disposal" in **page 7**.
- Do not fill the tank with water warmer than 40 °C.
- If the external flexible cable or cord of this transformer is damaged, it shall be replaced by the manufacturer or his service agent or a similar qualified person in order to avoid a Hazard.
- Keep the cord away from heated surfaces.
- Please do not use it if you lost the nozzle.
- Do not submerge the device in water.
- Do not use for any purpose other than oral cleaning.
- Keep nozzle away from small children. The nozzle is small enough to be swallowed and can be become lodged in the throat.
- Certain types of mouthwash may damage the equipment by causing the housing or water reservoir to crack. Therefore, do not use mouthwash in the water reservoir.
- People who experience tooth or gum pain may not be able to use this device and should consult their dentist.
- Do not press the nozzle too firmly against your teeth or gums. Doing so may injure your gums.

- Use this product only for its intended use as described in this manual. Do not use attachments not recommended by the manufacturer.
- Never operate this product if it has a damaged cord or plug, if it is not working properly, if it has been dropped or damaged, or dropped into water. Return the product to a service center for examination and repair.
- Keep the cord away from heated surfaces.
- Fill reservoir with water only. Do not overfill.
- Do not use outdoors.
- This appliance has a polarized plug (one blade is wider than the other). As a safety feature, this plug will fit in a polarized outlet only one way. If the plug does not fit fully in the outlet, reverse the plug. If it still does not fit, contact a qualified electrician. Do not attempt to defeat this safety feature.

SAVE THESE INSTRUCTIONS

How to use

Charging the device (Fig. 1)

1. Insert the adaptor plug into the power outlet.
2. Place the device onto right place of the charging base.
3. The "CH" indicator blinks when the device is charging, and steadily when fully charged.

Note:
If the "CH" indicator blinks during or after using, means the battery need to be recharged. Please note that it will take up to 24 hours to charge fully.

Use the Oral Irrigator

1. Attach nozzle onto the unit. (Fig. 2)
2. Open the water tank cap to fill with water not over 40°C, then close the cap.(Fig. 3)
3. Or, Slide the water tank down off the unit, fill the tank with water not over 40°C, then attach the tank onto the unit. (Fig. 4)

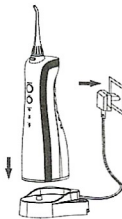


Fig.1

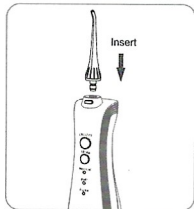


Fig. 2

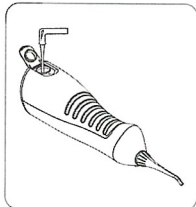


Fig. 3

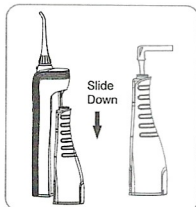


Fig. 4

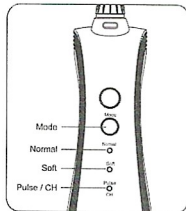


Fig. 5

4. Press "Mode" key to select the mode you desired. When the irrigator is working, you can change the working mode.(Fig. 5)

Normal: for normal cleaning.

Soft: for gentle cleaning of sensitive gums.

Pulse: for cleaning and massaging the gums.

At the start, we strogly advice you to choose the "soft" mode.

5. Hold the unit in an upright position with nozzle tip point toward your teeth.

6. Keep your mouth opened slightly so that the water can flow out.

7. Press "On/Off" key to start irrigating. (Fig. 6)

1). Directing the water jet flow at a 90-degree angle to the teeth and gums

2). Directing the water jet slowly along the teeth

3). Directing the water jet along the gum line with the nozzle tip at a 90-degree angle to the gum tissue

4). Cleaning between the teeth and around any braces, crowns or bridgework thoroughly.

After using the appliance (Fig. 8)

1. Open the water tank cap and dispose of the water in the tank.

2. Press "On/Off" key to turn on the unit, and drain the water inside the appliance.

3. Press "On/Off" key again to turn off the unit, and close the water tank cap.

4. Wipe the device with dry cloth.

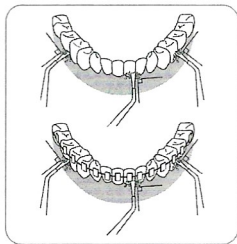


Fig. 6

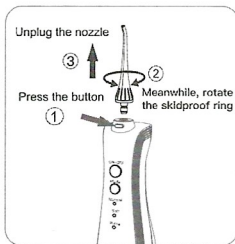


Fig. 7

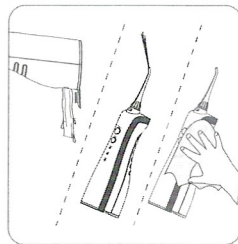


Fig. 8

Note:

To prevent bacteria propagating, make sure there is no remaining water inside. If you're not going to use this appliance for a long time, be sure to wipe and dry the appliance ASAP before storing it.

Maintenance

Use only water or neutral cleaning agent to clean the device. Never use caustic or abrasive agents (e.g., vinegar or lime scale removers) which may damage the device.

Do not wash using hot water over 50°C. Keep the device away from high temperature area and avoid direct sunlight.

Main unit

1. Remove the dirt by wiping using a cloth with liquid soap and wipe off using a dry cloth.
2. Do not submerge the main unit in water to clean.
3. Dry after washing with water.

Induction charger

1. Check the charger plug and cable at regular intervals, wipe the adapter plug with a cloth.
2. Open the cover of charging base, then clean and dry charger at regular intervals.

Nozzle

1. Wash with water and wipe with soft cloth.
2. Replace the nozzle every 6 months.

Water suction tube

1. Wash with water and wipe with soft cloth.
2. Do not bend, pull or twist the water suction tube.

Water tank

1. Wash with water and wipe with soft cloth.
2. Dry the tank when not using for a long period.

2 minutes auto shut-off timer

Auto shut off the device when the 2 minutes cycle is done.

TROUBLESHOOTING

Problem	Possible cause	Solution
It does not work	You've just purchased the product or it has been left unused for more than 3 months.	Charge the unit for about 24 hours.
It only works for a few minutes even after charging	The battery has reached the end of its life cycle.	Contact service center for support.
	Charging time was insufficient.	Charge the unit for about 24 hours.
Water pressure is very low	There is dirt stuck in the nozzle	Replace the nozzle
	The nozzle is deformed	
	There is dirt stuck in the filter	Clean the filter
Water does not come out	The tank is empty	Fill up tank
	The appliance is tilted too much while in use	Use with the appliance in a vertical state

Disposal

At the end of the product life cycle, please remove the rechargeable battery for recycling. Follow below instructions and adopt necessary protective measures before starting.

1. Remove 2pcs rubber feet on the bottom the handle. (Like on Fig. 9)
2. Insert a screwdriver into the slot located at the bottom of the handle and turn counter-clockwise to release the bottom cap. (Like on Fig. 9)
3. Slide the water down off the device and unscrew the two screws beside of the suction tube. (Fig. 10)
4. Open the top cover and put the inner out of the unit, then unscrew all the screws of the inner. (Fig. 11)
5. Cut off the battery line and pull out the batteries from the inner. (Fig. 12)

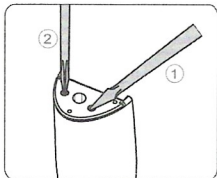
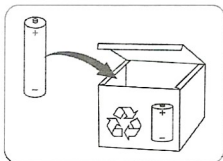


Fig. 9

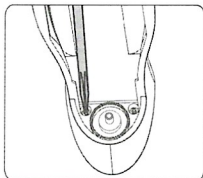


Fig. 10

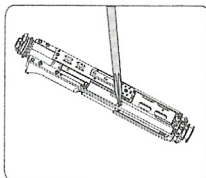


Fig. 11

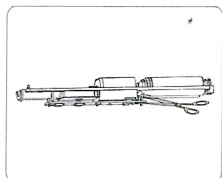


Fig. 12

Warranty

1. 12-Month Warranty

We'll provide 12-Month Warranty for all products (not including accessories) from the date of purchase, except products that has been damaged through alteration, mishandling, misuse or negligence.

2. 30-Day Money-Back Guarantee for Any Reason

You may return your **UNDAMAGED** product and packaging within 30 days of purchase to receive a **FULL REFUND** for any reason.

If the reason for return isn't quality-related, the customer must pay the return shipping costs.

3. If manufacturing defects occur, please contact MornWell support team immediately to launch a warranty claim, we will instruct you on how to return and get refund / replacement, Check out warranty policy at www.mornwell.com/warranty for more details.

mornwell

Manufacturer
Prooral Health Technology(Shenzhen)Ltd.
Building A,No 18 of Xinkang Road,Xinmu Community,
Pinghu, ShenZhen,China

www.mornwell.com
service@mornwell.com



Made in China